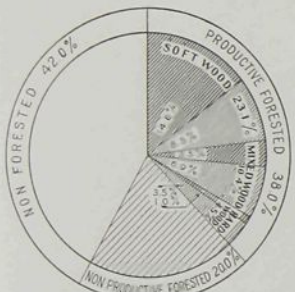


GRAPHIC RECORD OF FOREST RESOURCES AND FOREST INDUSTRIES

FORESTED AND NON FORESTED LANDS IN THE NINE PROVINCES

Merchantable forest shown in heavy shading



ALIENATED AND UNALIENATED FOREST LANDS

UNALIENATED
N.B. 11.5% N.S. 0.2%

QUE. 34.7%

ONT. 18.2%

MAN. 8.5%

SASK. 7.7%

ALTA. 11.8%

B.C. 17.8%

ALIENATED %

OTHER 22.2

N.S. 10.0

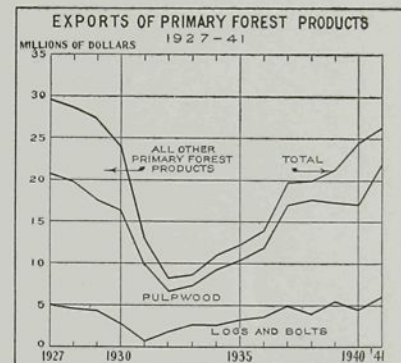
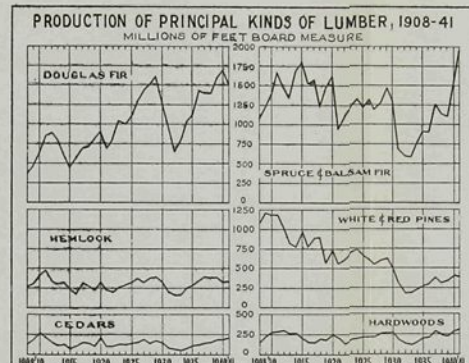
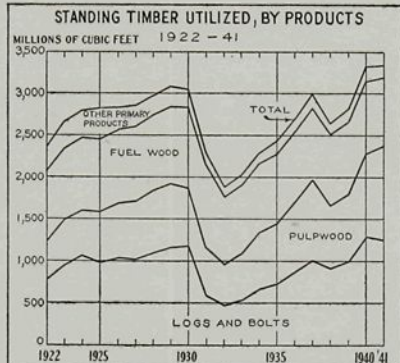
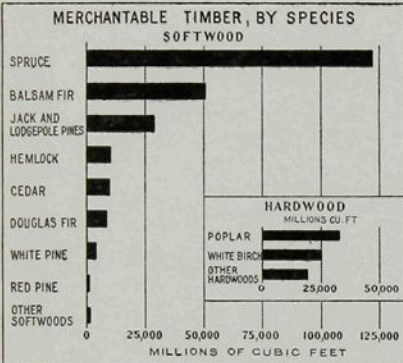
N.B. 12.9

QUE. 29.7

ALTA. 9.5

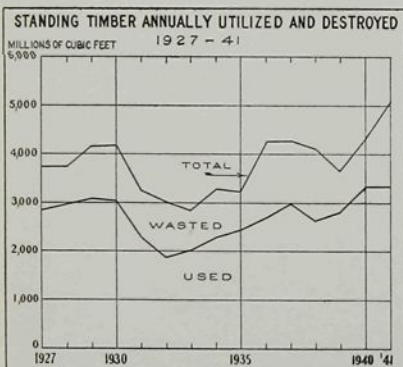
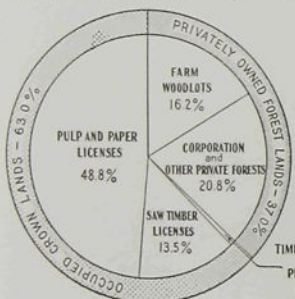
B.C. 15.7

TIMBER SALES and PERMITS 0.7%

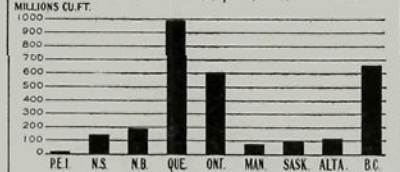


OWNERSHIP OF OCCUPIED FORESTED LANDS

Unoccupied Crown Forest Lands are not included in this chart, see →



AVERAGE ANNUAL UTILIZATION OF STANDING TIMBER BY PROVINCES, 1931-41



AVERAGE ANNUAL VALUE OF LUMBER PRODUCTION BY PROVINCES, 1931-41

